

Personal and Family Emergency Planning

by
Mel Ming
N7GCO

If you would like a PDF of
PowerPoint,

just email me at:

teammel@gmail.com

Or I have a jump drive
you can copy

Personal Experience

Baguio Earthquake

4:26 pm on July 16, 1990

7.7 or 7.8 Magnitude

P2.00
EARTHQUAKE
EXTRA

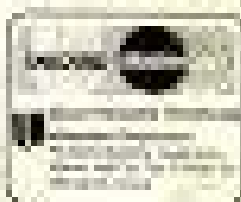
MONDAY, MAY 21, 1990

The Manila

CHRONICLE

PHILIPPINE NEWSPAPER

MAINTAINED BY THE PHILIPPINE NEWSPAPER ASSOCIATION



BAGUIO IN RUINS

A bigger
tragedy
unfolds

By [Name] [Location]

THE TRAGEDY OF BAGUIO, PHILIPPINE NEWSPAPER, MAY 21, 1990. THE CITY OF BAGUIO WAS HIT BY A 7.6 MAGNITUDE EARTHQUAKE AT 1:05 PM. THE SHAKING LASTED FOR SEVERAL MINUTES. THE CITY WAS IN RUINS. THE DEATH TOLL WAS 1,000. THE DAMAGE TO PROPERTY WAS \$100 MILLION. THE CITY WAS IN RUINS. THE DEATH TOLL WAS 1,000. THE DAMAGE TO PROPERTY WAS \$100 MILLION. THE CITY WAS IN RUINS. THE DEATH TOLL WAS 1,000. THE DAMAGE TO PROPERTY WAS \$100 MILLION.



Baguio

- A Town of a quarter of million people
- 5,000 feet high
- The summer capital of the Philippines
- Home to many Universities
- 155 miles north of Manila

FATALITIES

- An estimated **1,621** people were killed in the earthquake.

BAGUIO CITY: DAMAGE TO LIFELINE SYSTEMS

- Electric, water and communication lines were destroyed.
- The main route to Baguio, as well as all other access routes, were shut down by landslides
- Airport runway destroyed

Baguio City was **totally isolated** from the rest of the Philippines for **48 hours** after the quake.







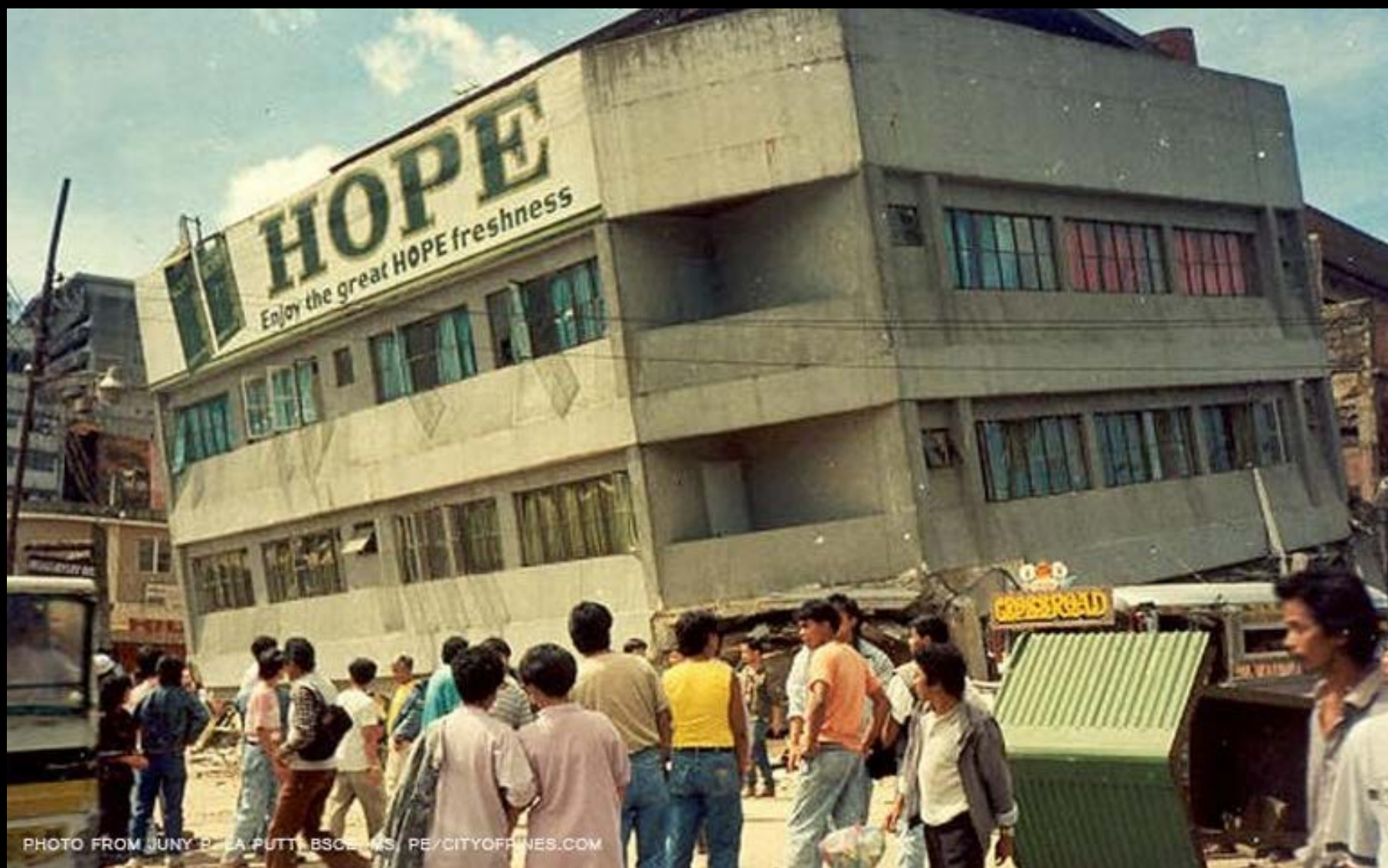


PHOTO FROM JUNE P. LA PUTT, BSCE, MS, PE/CITYOFFICES.COM



PHOTO FROM JUNY P. LA PUTT, BSCE, MS, PE/CITYOFFPINES.COM



Communication

- All communication out of Baguio was through three ham stations on the campus of Asia Pacific Theological Seminary.
- Initial relief efforts were between these stations and the UN in Hong Kong.
- Because we had fuel and generators, these stations were available 24 hours a day for the first three days.
- We also had water, food, and cash because we had an emergency plan.

**I believe in
being as prepared
as we can for
emergencies**

EMERGENCY GO SYSTEM

I. Modular Approach

II. Environments

A. Car/Vehicles (3)

B. Go System Personal (2)

C. Go System Radio (2)

D. Go System Power (2)

E. Home Emergency System

A. Car/Vehicles Modules

1. Car Emergency Go Bag
2. Car Emergency Tool Bag
3. Car Winter Go Bag (October-April)

Car Emergency Go Bag

4 Person Kit weight 20 lbs

- 1 - Backpack
- 6 - 400 Calorie Food Bars
- 4 - Solar Blankets
- 16 - Pouches of Waters
- 4 - Dust Masks
- 4 - Ponchos
- 1 – Flashlight (2 AA)
- 1 – Flashlight (1 AA) in front pocket
- 12 – Energizer Ultimate Lithium "AA Batteries
- 1 - 2 Person Tent
- 1 - 50' Nylon Cord
- 3 - 12 Hr. Light Stick
- 1 - 92 Piece First Aid Kit (General Medi)

- 50 - Water Purification Tablets
- 2 - Waterproof Matches holders (1 in front pocket & 1 in bag)
- 1 - Utility Knife
- 1 – Whistle (in front packet)
- 1 - AM/FM Radio with Batteries
- 1 - Camper's Stove
- 1 - Pair Gloves
- 1 – Compass (in front pocket)
- 1 – Fire striker and flint (In front pocket)
- 1 – Leatherman Wingman (in front pocket)
- 1 – Ccrane Solar Emergency Radio (Also USB power)
- 1 – Lifestraw water filter
- 1 – BIC Lighter

Car Emergency Go Bag



Car Emergency Tool Bag

- Gerber Center Drive Multi-Tool
- 10" Crescent wrench
- 12" Channel lock Tongue and Groove Plier
- 9 1/2" Lineman's pliers
- Electric Tape
- Duct Tape
- Rope
- Flashlight
- Headlight
- Knife Sharpener
- Box cutter
- Small Shovel
- ABC Fire Extinguisher
- LED Flares
- Small Tarp (to use as ground cloth for repairs)
- Zip Ties
- Trash Bags
- BIC Lighter

Car Winter Go Bag

- Sweatshirt
- Pants
- Socks
- Shoes
- Jacket (Fleece)
- Jacket (wind and rain)
- Gloves
- Stocking Cap
- Yellow emergency vest with reflector tape on it
- Headlamp

B. Go System Personal Modules

1. Personal Go Bag
2. Safe Go Bag

Personal Go Bag

- Food/drink
- Cash
- Shirt
- Pants
- Coat
- Long johns
- Tee shirt
- Underwear
- Wool socks
- PJ bottoms
- Slippers
- Bag #1
- Powder
- Q-tips
- Shaver
- Floss
- Toothbrush
- Toothpaste
- Kleenex
- Razor
- Soap
- Small flashlight
- Nail trimmer
- Bag #2
- Comb
- Azithromycin
- Shaver charger
- Alarm Clock
- Band-aids
- Lip Balm
- Swiss Army knife
- Lamisil
- Repair kit
- Len's wipes
- Scissors
- Leatherman Micro
- Tide Stain remover
- Plastic sacks
- Bag #3 (REI)
- Flashlight
- Notepad
- Pen
- Battery pack
- 2 Iphone cables
- USB charger
- Splenda
- RX daily medicines
-

Safe Go Bag

- Cash
- Originals & Masters
- XXX and YYY's Passport
- Marriage license
- XXX's Birth Certificate
- YYY's Birth Certificate
- YYY's Social Security Card
- XXX's Social Security Card
- YYY's Durable Power of Attorney for Property Management and Health Care
- XXX's Durable Power of Attorney for Property Management and Health Care
- YYY's Will
- XXX's Will
- Copy of XXX's Credit cards
- Copy of YYY's Credit cards
- Retirement Financial statement
- Hard Drive with Data

- Paperwork for XXX
- XXX's Birth Certificate
- XXX's Social Security Card
- XXX's Passport copy
- XXX's Driver License
- XXX's Medicare Card
- XXX's Insurance Card
- XXX's Durable Power of Attorney for Property Management and Health Care
- Marriage license
- YYY's Birth Certificate
- YYY's passport copy
- YYY's social security card
- Family Social Security numbers
- Jump Drive with Documents

- Paperwork for YYY
- YYY's Birth Certificate
- YYY's passport copy
- YYY's social security card
- YYY's Driver's License
- YYY's Medicare Card
- YYY's Insurance Card
- YYY's Durable Power of Attorney for Property Management and Health Care
- Marriage license
- XXX's Birth Certificate
- XXX's Social Security Card
- XXX's Passport copy
- XXX's Driver License
- XXX's Medicare Card
- XXX's Insurance Card
- Family Social Security numbers
- Jump Drive with Documents

Safe Go Bag



C. Go System Radio Modules

1. VHF/UHF Radio Go Bag
2. HF Radio Go Bag

VHF/UHF Radio Go Bag

Outside end Pocket

Safety Vest

Outside Front Pocket

Screw Driver

Flashlight

Multitool

Headlamp

Gaffers Tape

Electrical Tape

Outside Top Pocket

Antenna

Emergency Blanket

End Zipper Pocket (Bag #4)

Adapters

Klein Tool Bag #1 (Antenna)

Slim Jim 2m/440 J-pole antenna (BNC)

TwoWay RH770 Telescoping antenna

Weaver Throw line and weight

Bag #2 (Power)

Wall Charger

Car Charger

Powerpole Charger

Powerpole extension cables

Bag #3 (Batteries)

Icom BP-273 AA Battery Case

Icom BP-271 Battery

Icom BP-272LH Battery (2)

Handheld case

Bag #5 (Manuals)

Jiffy Manual

Short cut card

Manual

Memories List

Emergency call numbers

Ham License

Notepad

Pen

HF Radio Bag

- Icom 706 MKIIg
- Icom 706 MKIIg power connector
- Icom AH-4 (Antenna Tuner)
- 2 - 25' RG8x coax cables
- 2 - PL 259 barrel connectors
- 2 - 25' Antenna Tuner cables
- Antenna wire with insulator
- Antenna rope
- Rigrunner Power distribution
- PowerPole extension cables
- Samlex SEC-1235M Power Supply
- Extension cord for power supply
- Ground stake for tuner
- Ground wire for tuner

D. Go System Power

1. Bioenno LiFePO4 Battery Box (15 amp)
2. Samlex SEC-1235M Power Supply (30 amp)



E. Home Emergency Module

1. 22KW Propane Generator
2. 500 gallon Propane Tank



E. Home Emergency Module

1. 22KW Propane Generator
2. 500 gallon Propane Tank
3. Well
4. Two weeks food supply
5. 40 gallons drinking water (8 Five Gallon Containers)
6. Backup Battery power in Ham Shack



Super PWRgate PG40S

RIGrunner 4012

Astron 70 Amp Linear
Power Supply With Meters

12 volt Deep
Cycle Battery

E. Home Emergency Module

1. 22KW Propane Generator
2. 500 gallon Propane Tank
3. Well
4. Two weeks food supply
5. 40 gallons drinking water
6. Backup Battery power in Ham Shack
7. Tower & Antenna's



Antenna System

- SteppIR DB 18 (10, 12, 15, 17, 20, 30, & 40)
- 60 Meter inverted V
- 80 Meter Inverted V (E-W)
- 80 Meter Loop (N-S)
- 160 Inverted L
- 40 & 80 meter NVIS inverted V
- DHDL Receive Antenna (80 & 160 meter)
- 2m/440 J-pole at 95'
- 2m/440 Vertical gain antenna at 45'
- Butternut HF6V Vertical (10,15,20,30,40,80)

E. Home Emergency Module

1. 22KW Propane Generator
2. 500 gallon Propane Tank
3. Well
4. Two weeks food supply
5. 40 gallons drinking water
6. Backup Battery power in Ham Shack
7. Tower & Antenna's
8. Ham Shack



Station

- Icom 7600 (SSB),
- Icom 7300 (Digital)
- Icom PW-1 Amp (1K) for HF.
- Kessler Engineering 1,500 watt AT-Auto tuner.
- RadioCraft Pro 3000 SWR/power for SteppIR Antenna
- WaveNode WN-2 SWR/Power for all other antennas
- Heil Boom with PR 781 Mike connected to IPlus by W2IHY.
- Behringer Xenyx 1204 USB Mixer for sound from all radios and computer.
- Kenwood D710GA (VHF/UHF Winlink)
- Kenwood G707 (VHF/UHF Winlink thru Kantronics 3+)
- Icom 5100A (VHF/UHF)

E. Home Emergency Module

1. 22KW Propane Generator
2. 500 gallon Propane Tank
3. Well
4. Two weeks food supply
5. 40 gallons drinking water
6. Backup Battery power in Ham Shack
7. Tower & Antenna's
8. Ham Shack
9. Emergency Preparedness Plan for Home

EMERGENCY MODULES

1. Car Emergency Go Bag
2. Car Emergency Tool Bag
3. Car Winter Go Bag (October-April)
4. Personal Go Bag
5. Safe Go Bag
6. VHF/UHF Radio Go Bag
7. HF Radio Go Bag
8. Portable Emergency Power
9. Home Emergency system

Emergency Preparedness Plan for Home

- Make sure all the family knows the plan
- Make sure the plan is comprehensive
- Regularly test, inspect and update all expendable items (Batteries, water, energy bars, first aid supplies, etc.) We do this twice a year.
- Have a yearly practice run.

EMERGENCY GO SYSTEM

I. Modular Approach

II. Environments

- A. Car/Vehicles (3)
- B. Go System Personal (2)
- C. Go System Radio (2)
- D. Go System Power (2)
- E. Home Emergency System

Personal Emergency Plan

1. Is it time to review your personal/family emergency plan?
2. Does your family know and understand your emergency plan?
3. Have you included the different environments in your personal emergency plan?

**Thank You for
allowing me to
share my personal
emergency plan**

If you need help getting
your station setup for HF
or doing DX or Contesting,
just let me know.

Contact Information

If you would like a PDF of PowerPoint, just email me at:

teammel@gmail.com

FACEBOOK: Mel Ming